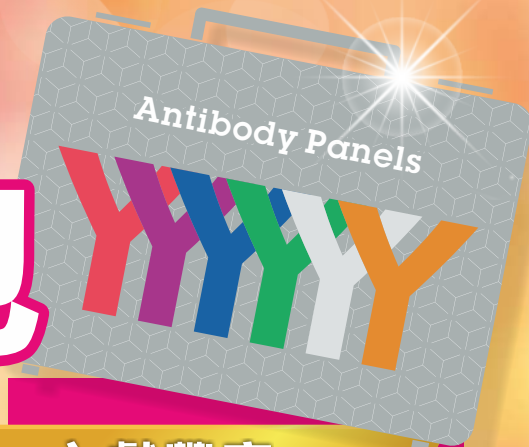


抗體組合包



高CP值

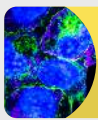
Abcam 嚴選推出的小包裝抗體組合包，讓您以更經濟實惠的方式偵測多種研究標的！

優質便利

針對 Neuroscience, Cancer, Stem Cells 等熱門研究主題，收錄最核心重要的研究標的抗體，讓實驗更加便利且全面！

文獻豐富

所收錄的抗體擁有豐富的文獻紀錄與公開透明的使用者心得評論，讓您買的安心、用的安心。



官網產品頁面
Abcam Antibody Panels



中文產品型錄
Abcam Antibody Panels

產品資訊與最新優惠訊息，請洽
Abcam 台灣代理 — 伯森生技。

矚目商品

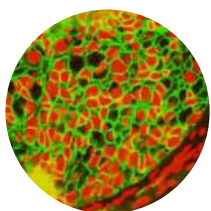
Antibody Panel and Components	Reactivity				Application	Size	Cat. No.
	Host	Hu	Ms	Rt			
Epithelial to Mesenchymal Transition (EMT) Marker Panel (ab216833)							
Anti-E Cadherin antibody [EP700Y] ●	Rb	•			WB IHC ICC/IF FCM	10 µl	ab40772
Anti-N Cadherin antibody [EPR1791-4] ●	Rb	•	•	•	WB IHC	10 µl	ab76011
Anti-SNAIL + SLUG antibody	Rb	•			WB IHC	10 µg	ab85936
Anti-Vimentin antibody [EPR3776] ● ■	Rb	•	•	•	WB IHC ICC/IF FCM	10 µl	ab92547
Goat Anti-Rabbit IgG H&L (HRP)	Gt				WB IHC	100 µg	ab205718

Rabbit Loading Control Antibody Panel (ab199712)

Anti-alpha Tubulin antibody [EPR13478(B)] - Loading Control ●	Rb	•	•	•	WB IHC ICC/IF FCM	10µl	ab176560
Anti-COX IV antibody [EPR9442(ABC)] - Mitochondrial Loading Control ●	Rb	•	•	•	WB IHC ICC/IF FCM	10µl	ab202554
Anti-GAPDH antibody [EPR16891] ●	Rb	•	•	•	WB IHC ICC/IF FCM	10µl	ab181602
Anti-Histone H3 antibody [EPR16987] - Nuclear Loading Control and ChIP Grade ●	Rb	•	•	•	WB IHC ICC/IF FCM ChIP	10µl	ab176842
Anti-Sodium Potassium ATPase antibody [EP1845Y] - Plasma Membrane Loading Control ●	Rb	•	•	•	WB IHC ICC/IF FCM	10µl	ab76020
Goat Anti-Rabbit IgG H&L (HRP)	Gt				WB IHC	100 µg	ab205718

● RabMAb® ■ KO Validated

FCM = Flow Cytometry, Hu = Human, Gt = Goat, Ms = Mouse, Rb = Rabbit, Rt = Rat



IHC - Anti-E Cadherin antibody [EP700Y] (ab40772)



WB - Anti-GAPDH antibody [EPR16891] (ab181602)

Citations

Anti-E Cadherin antibody [EP700Y] (ab40772)	Anti-N Cadherin antibody [EPR1791-4] (ab76011)	Anti-Vimentin antibody [EPR3776] (ab92547)	Rabbit Loading Control Antibody Panel (ab199712)
<ul style="list-style-type: none"> • Sci Rep 8:1076 (2018). PubMed: 29348629 • Am J Transl Res 9:1402-1409 (2017). PubMed: 28386365 	<ul style="list-style-type: none"> • J Cell Mol Med 22:1190-1201 (2018). PubMed: 29077259 • Cancer Sci 109:354-362 (2018). PubMed: 29160937 	<ul style="list-style-type: none"> • Int J Mol Med 41:659-668 (2018). PubMed: 29207055 • PLoS One 13:e0189433 (2018). PubMed: 29293543 	<ul style="list-style-type: none"> • Hum Mol Genet 23:2005-22 (2014). PubMed: 24271013 • Mol Cancer 13:22 (2014). PubMed: 24495796

