

抗體組合包



高 CP 值

Abcam 嚴選推出的小包裝抗體組合包，讓您以更經濟實惠的方式偵測多種研究標的！

優質便利

針對 Neuroscience, Cancer, Stem Cells 等熱門研究主題，收錄最核心重要的研究標的抗體，讓實驗更加便利且全面！

文獻豐富

所收錄的抗體擁有豐富的文獻紀錄與公開透明的使用者心得評論，讓您買的安心、用的安心。

Abcam Antibody Panels

◀ 中文目錄索引 ▶

產品資訊與最新優惠訊息，請洽
Abcam 台灣代理 — 伯森生技。

P1 Cancer

P2 Cell Death | Neuroscience

P3 Neuroscience

P4 Cell Cycle & Signaling

P5 Stem Cells

P6 Immunology | Epigenetics

P7 Epigenetics

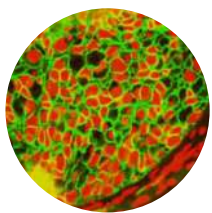
P8 WB Loading Control

Cancer

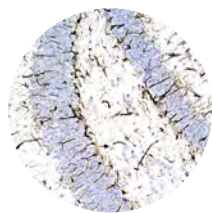
Antibody Panel and Components	Reactivity				Application	Size	Cat. No.
	Host	Hu	Ms	Rt			
Epithelial to Mesenchymal Transition (EMT) Marker Panel (ab216833)							
Anti-E Cadherin antibody [EP700Y] ●	Rb	•			WB IHC ICC/IF FCM	10 µl	ab40772
Anti-N Cadherin antibody [EPR1791-4] ●	Rb	•	•	•	WB IHC	10 µl	ab76011
Anti-SNAIL + SLUG antibody	Rb	•			WB IHC	10 µg	ab85936
Anti-Vimentin antibody [EPR3776] ●■	Rb	•	•	•	WB IHC ICC/IF FCM	10 µl	ab92547
Goat Anti-Rabbit IgG H&L (HRP)	Gt				WB IHC	100 µg	ab205718

● RabMAb® ■ KO Validated

FCM = Flow Cytometry, Hu = Human, Gt = Goat, Ms = Mouse, Rb = Rabbit, Rt = Rat



IHC - Anti-E Cadherin antibody [EP700Y] (ab40772)



IHC - Anti-Vimentin antibody [EPR3776]

Citations

Anti-E Cadherin antibody [EP700Y] (ab40772)	Anti-N Cadherin antibody [EPR1791-4] (ab76011)	Anti-SNAIL + SLUG antibody (ab85936)	Anti-Vimentin antibody [EPR3776] (ab92547)
<ul style="list-style-type: none"> • Sci Rep 8:1076 (2018). PubMed: 29348629 • Am J Transl Res 9:1402-1409 (2017). PubMed: 28386365 	<ul style="list-style-type: none"> • J Cell Mol Med 22:1190-1201 (2018). PubMed: 29077259 • Cancer Sci 109:354-362 (2018). PubMed: 29160937 	<ul style="list-style-type: none"> • Oncol Lett 14:1697-1702 (2017). PubMed: 28789397 • Hepatology 63:1256-71 (2016). PubMed: 26698646 	<ul style="list-style-type: none"> • Int J Mol Med 41:659-668 (2018). PubMed: 29207055 • PLoS One 13:e0189433 (2018). PubMed: 29293543



Cell Death

Antibody Panel and Components

Reactivity
Host Hu Ms Rt Application Size Cat. No.

Autophagy Antibody Sampler Panel (ab228525)

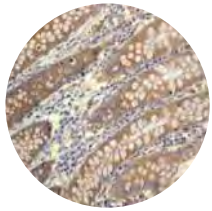
Anti-APG5L/ATG5 antibody [EPR1755(2)] ●■	Rb	• • •	WB IHC ICC/IF	10 µl	ab108327
Anti-ATG16L1 antibody [EPR15638] ●■	Rb	• • •	WB IHC	10 µl	ab187671
Anti-ATG4B antibody [EPR6436(2)] ●■	Rb	• • •	WB FCM	10 µl	ab154843
Anti-ATG9A antibody [EPR2450(2)] ●■	Rb	• • •	WB IHC ICC/IF FCM	10 µl	ab108338
Anti-Beclin 1 antibody [EPR19662] ●	Rb	• • •	WB ICC/IF	10 µl	ab207612
Anti-LC3B antibody [EPR18709] ●■	Rb	• • •	WB ICC/IF	10 µl	ab192890
Goat Anti-Rabbit IgG H&L (HRP)	Gt		WB IHC	100 µg	ab205718

Pro-Apoptosis Bcl Family Antibody Sampler Panel (ab228527)

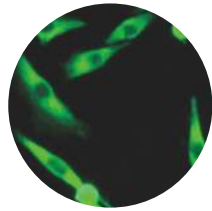
Anti-Bad antibody [Y208] ●■	Rb	• • •	WB IHC ICC/IF FCM	10 µl	ab32445
Anti-Bax antibody [E63] ●■	Rb	• • •	WB IHC	10 µl	ab32503
Anti-Bcl-2 antibody [EPR17509] ●■	Rb	• • •	WB IHC ICC/IF FCM	10 µl	ab182858
Anti-Bcl-XL antibody [E18] ●	Rb	• • •	WB IHC ICC/IF FCM	10 µl	ab32370
Anti-MCL1 antibody [Y37] ●	Rb	• • •	WB IHC ICC/IF FCM	10 µl	ab32087
Anti-PUMA antibody [EP512Y] ●	Rb	•	WB IHC ICC/IF FCM	10 µl	ab33906
Goat Anti-Rabbit IgG H&L (HRP)	Gt		WB IHC	100 µg	ab205718

● RabMAb® ■ KO Validated

FCM = Flow Cytometry, Hu = Human, Gt = Goat, Ms = Mouse, Rb = Rabbit, Rt = Rat



IHC - Anti-ATG9A antibody [EPR2450(2)] (ab108338)



ICC/IF - Anti-PUMA antibody [EP512Y] (ab33906)

Citations

Anti-ATG9A antibody [EPR2450(2)] (ab108338)	Anti-Bax antibody [E63] (ab32503)	Anti-Beclin 1 antibody [EPR19662] (ab207612)	Anti-PUMA antibody [EP512Y] (ab33906)
<ul style="list-style-type: none"> EMBO J 37:235-254 (2018). PubMed: 29158324 Cell Res 27:184-201 (2017). PubMed: 27934868 	<ul style="list-style-type: none"> Environ Toxicol 33:52-62 (2018). PubMed: 29044990 Cell Death Dis 9:172 (2018). PubMed: 29416039 	<ul style="list-style-type: none"> Sci Rep 8:1552 (2018). PubMed: 29367610 Mol Med Rep 15:2097-2105 (2017). PubMed: 28259912 	<ul style="list-style-type: none"> J Dermatol Sci N/A:N/A (2018). PubMed: 29307600 Oncotarget 8:61057-61071 (2017). PubMed: 28977846

Neuroscience

Antibody Panel and Components

Reactivity
Host Hu Ms Rt Application Size Cat. No.

Astrocyte Marker Panel (ab226481)

Anti-ALDH1L1 antibody [EPR12743(B)] ●	Rb	• • •	WB IHC	10 µl	ab177463
Anti-EAAT1 antibody [EPR12686] ●	Rb	• • •	WB IHC	10 µl	ab181036
Anti-EAAT2 antibody [EPR19798] ●	Rb	• •	WB IHC	10 µl	ab205248
Anti-GFAP antibody [EPR1034Y] ●	Rb	• • •	WB IHC	10 µl	ab68428
Goat Anti-Rabbit IgG H&L (HRP)	Gt	• • •	WB IHC	100 µg	ab205718

Conformation-Specific Amyloid beta Antibody Sampler Panel (ab218719)

Anti-Amyloid Fibril antibody [mOC116] - Conformation-Specific ●	Rb	•	IHC	10 µl	ab205342
Anti-Amyloid Fibril antibody [mOC22] - Conformation-Specific ●	Rb	•	IHC	10 µl	ab205339
Anti-Amyloid Fibril antibody [mOC78] - Conformation-Specific ●	Rb	•	IHC	10 µl	ab205341
Anti-Amyloid Fibril antibody [mOC87] - Conformation-Specific ●	Rb	• •	IHC	10 µl	ab201062
Anti-beta Amyloid 1-42 antibody [mOC23] - Conformation-Specific ●	Rb	•	IHC	10 µl	ab205340
Anti-beta Amyloid 1-42 antibody [mOC31] - Conformation-Specific ●	Rb	• •	IHC	10 µl	ab201059
Anti-beta Amyloid 1-42 antibody [mOC64] - Conformation-Specific ●	Rb	• •	WB IHC	10 µl	ab201060
Anti-beta Amyloid 1-42 antibody [mOC98] - Conformation-Specific ●	Rb	• •	WB IHC	10 µl	ab201061
Goat Anti-Rabbit IgG H&L (HRP)	Gt		WB IHC	100 µg	ab205718

FCM = Flow Cytometry, Hu = Human, Gt = Goat, Ms = Mouse, Rb = Rabbit, Rt = Rat

Mature Neuron Marker Panel (ab218257)

Anti-MAP2 antibody [EPR19691] ●	Rb	• • •	IHC	10 µl	ab183830
Anti-NeuN antibody [EPR12763] ●	Rb	• • •	WB IHC ICC/IF FCM	10 µl	ab177487
Anti-Neurofilament heavy polypeptide antibody [EPR20020] ●	Rb	• • •	WB IHC ICC/IF	10 µl	ab207176
Anti-PSD95 antibody [EP2652Y] ●	Rb	• • •	WB IHC ICC/IF FCM ChIP	10 µl	ab76115
Anti-Synaptophysin antibody [YE269] ●	Rb	• • •	WB IHC ICC/IF	10 µl	ab32127
Goat Anti-Rabbit IgG H&L (HRP)	Gt		WB IHC	100 µg	ab205718

Microglial Marker Panel (ab226482)

Anti-CD11b antibody [EPR1344] ●	Rb	• • •	WB IHC	10 µl	ab133357
Anti-CD45 antibody [EP322Y] ●	Rb	•	WB IHC ICC/IF FCM	10 µl	ab40763
Anti-Iba1 antibody [EPR16588] ●	Rb	• • •	WB IHC	10 µl	ab178846
Anti-TMEM119 antibody [28-3] ●	Rb	•	IHC	10 µl	ab209064
Goat Anti-Rabbit IgG H&L (HRP)	Gt		WB IHC	100 µg	ab205718

Parkinson's Disease Research Antibody Panel (ab226767)

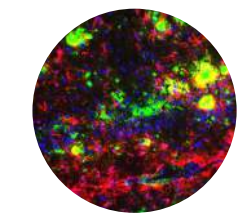
Anti-alpha Synuclein antibody [MJFR1] ●■	Rb	•	WB IHC ICC/IF FCM	10 µl	ab138501
Anti-LRRK2 antibody [MJFF2 (c41-2)] ●■	Rb	• • •	WB IHC ICC/IF	10 µl	ab133474
Anti-PARK7/DJ1 antibody [EP2815Y] ●■	Rb	• • •	WB IHC ICC/IF FCM	10 µl	ab76008
Anti-Parkin antibody [EPR5024(N)] ●	Rb	• • •	WB IHC ICC/IF FCM	10 µl	ab179812
Anti-PINK1 antibody [EPR20730] ●	Rb	•	WB ICC/IF	10 µl	ab216144
Goat Anti-Rabbit IgG H&L (HRP)	Gt		WB IHC	100 µg	ab205718

Tau Research Antibody Panel (ab226492)

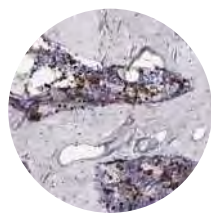
Anti-Tau (phospho S198) antibody [EPR2400] ●	Rb	•	WB IHC ICC/IF	10 µl	ab79540
Anti-Tau (phospho S199) antibody [EPR2401Y] ●	Rb	• • •	WB IHC	10 µl	ab81268
Anti-Tau (phospho S202 + T205) antibody [EPR20390] ●	Rb	•	WB	10 µl	ab210703
Anti-Tau (phospho S214) antibody [EPR1884(2)] ●	Rb	• • •	WB IHC	10 µl	ab170892
Anti-Tau (phospho S396) antibody [EPR2731] ●	Rb	• • •	WB IHC	10 µl	ab109390
Anti-Tau (phospho S404) antibody [EPR2605] ●	Rb	• • •	WB IHC ICC/IF	10 µl	ab92676
Anti-Tau (phospho S422) antibody [EPR2866] ●	Rb	•	WB	10 µl	ab79415
Anti-Tau (phospho T231) antibody [EPR2488] ●	Rb	• • •	WB IHC	10 µl	ab151559
Anti-Tau antibody [TAU-5]	Ms	• • •	WB ICC/IF FCM	10 µl	ab80579
Goat Anti-Mouse IgG H&L (HRP)	Gt	•	WB IHC	100 µg	ab205719
Goat Anti-Rabbit IgG H&L (HRP)	Gt		WB IHC	100 µg	ab205718

● RabMAB® ■ KO Validated

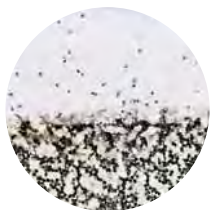
FCM = Flow Cytometry, Hu = Human, Gt = Goat, Ms = Mouse, Rb = Rabbit, Rt = Rat



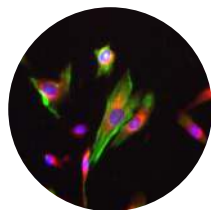
IHC - Anti-Amyloid Fibril antibody [mOC87] (ab201062)



IHC - Anti-CD11b antibody [EPR1344] (ab133357)



IHC - Anti-NeuN antibody [EPR12763] (ab177487)



ICC/IF - Anti-Tau antibody [TAU-5] (ab80579)

Citations

Anti-alpha-Synuclein antibody [MJFR1] (ab138501)	Anti-beta Amyloid 1-42 antibody [mOC64] (ab201060)	Anti-CD11b antibody [EPR1344] (ab133357)	Anti-GFAP antibody [EPR1034Y] (ab68428)
<ul style="list-style-type: none"> Front Cell Neurosci 12:4 (2018). PubMed: 29387000 Int J Mol Med 40: 1772-1780 (2017). PubMed: 29039448 	<ul style="list-style-type: none"> Front Pharmacol 8:219 (2017). PubMed: 28553224 Biomed Res Int 2017:3706018 (2017). PubMed: 29138750 	<ul style="list-style-type: none"> Mol Ther Oncolytics 8:14-26 (2018). PubMed: 29322091 Sci Rep 7:43776 (2017). PubMed: 28256637 	<ul style="list-style-type: none"> Neuroscience 372:192-212 (2018). PubMed: 29292072 Oncotarget 8:18082-18094 (2017). PubMed: 28178646
Anti-NeuN antibody [EPR12763] (ab177487)	Anti-Parkin antibody [EPR5024(N)] (ab179812)	Anti-Synaptophysin antibody [YE269] (ab32127)	Anti-Tau (phospho S214) antibody [EPR1884(2)] (ab170892)
<ul style="list-style-type: none"> Sci Rep 8:11 (2018). PubMed: 29311646 Front Neurosci 12:11 (2018). PubMed: 29422836 	<ul style="list-style-type: none"> Sci Rep 7:13554 (2017). PubMed: 29051574 Int J Mol Sci 18:N/A (2017). PubMed: 29112159 	<ul style="list-style-type: none"> Mol Brain 11:7 (2018). PubMed: 29426354 Mol Neurobiol 54:855-865 (2017). PubMed: 26780455 	<ul style="list-style-type: none"> Nat Commun 9:433 (2018). PubMed: 29382817 Sci Rep 6:34784 (2016). PubMed: 27708431

Cell Cycle Antibody Sampler Panel (ab228528)

Anti-Cdk2 antibody [E304] ●■	Rb	• • •	WB IHC ICC/IF FCM	10 µl	ab32147
Anti-Cdk6 antibody [EPR4515] ●■	Rb	•	WB IHC ICC/IF FCM	10 µl	ab124821
Anti-Cyclin B1 antibody [EPR17060] ●■	Rb	• •	WB IHC ICC/IF FCM	10 µl	ab181593
Anti-Cyclin D1 antibody [EPR2241] •	Rb	• • •	WB IHC ICC/IF	10 µl	ab134175
Anti-p21 antibody [EPR3993] ●■	Rb	• • •	WB ICC/IF	10 µl	ab109199
Anti-p27 KIP 1 antibody [Y236] ●■	Rb	• • •	WB IHC ICC/IF FCM	10 µl	ab32034
Goat Anti-Rabbit IgG H&L (HRP)	Gt		WB IHC	10 µl	ab205718

NF-κB Signaling Pathway Antibody Sampler Panel (ab228529)

Anti-IκB alpha (phospho S36) antibody [EPR6235(2)] •	Rb	• •	WB ICC/IF FCM	10 µl	ab133462
Anti-IκB alpha antibody [E130] ●■	Rb	• • •	WB IHC ICC/IF FCM	10 µl	ab32518
Anti-NFκB p105 / p50 antibody [E381] ●■	Rb	• • •	WB IHC	10 µl	ab32360
Anti-NF-κB p65 (phospho S536) antibody [EP2294Y] •	Rb	•	WB	10 µl	ab76302
Anti-NF-κB p65 antibody [E379] ●■	Rb	• •	WB IHC ICC/IF FCM	10 µl	ab32536
Goat Anti-Rabbit IgG H&L (HRP)	Gt		WB IHC	10 µl	ab205718

p53 Antibody Sampler Panel (ab219089)

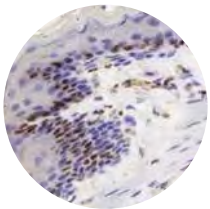
Anti-Mutant p53 antibody [Y5] •	Rb	•	WB IHC ICC/IF FCM	10 µl	ab32049
Anti-p53 (acetyl K382) antibody [EPR358(2)] •	Rb	•	WB IHC ICC/IF	10 µl	ab75754
Anti-p53 (phospho S20) antibody [EPR2156(2)] •	Rb	•	WB	10 µl	ab157454
Anti-p53 (phospho S392) antibody [EP155Y] •	Rb	• • •	WB IHC	10 µl	ab33889
Anti-p53 (phospho S46) antibody [EP42Y] •	Rb	•	WB IHC ICC/IF	10 µl	ab76242
Anti-p53 antibody [DO-1] ■	Ms	•	WB IHC ICC/IF FCM ChIP	10 µg	ab1101
Goat Anti-Mouse IgG H&L (HRP)	Gt	•	WB IHC	100 µg	ab205719
Goat Anti-Rabbit IgG H&L (HRP)	Gt		WB IHC	100 µg	ab205718

Wnt/Beta Catenin Signaling Pathway Antibody Sampler Panel (ab228526)

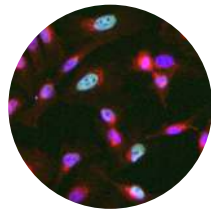
Anti-c Myc antibody [Y69] •	Rb	• • •	WB IHC ICC/IF FCM	10 µl	ab32072
Anti-c-Jun antibody [E254] •	Rb	• • •	WB IHC ICC/IF	10 µl	ab32137
Anti-Cyclin D1 antibody [EPR2241] •	Rb	• • •	WB IHC ICC/IF	10 µl	ab134175
Anti-LEF1 antibody [EPR2029Y] •	Rb	• • •	WB IHC ICC/IF FCM	10 µl	ab137872
Anti-Met (c-Met) antibody [EP1454Y] ●■	Rb	• • •	WB IHC ICC/IF FCM	10 µl	ab51067
Anti-TCF7 antibody [EPR2035] •	Rb	• •	WB ICC/IF	10 µl	ab134127
Goat Anti-Rabbit IgG H&L (HRP)	Gt		WB IHC	100 µg	ab205718

● RabMAB® ■ KO Validated

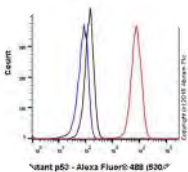
FCM = Flow Cytometry, Hu = Human, Gt = Goat, Ms = Mouse, Rb = Rabbit, Rt = Rat



IHC - Anti-Cyclin D1 antibody [EPR2241] (ab134175)



ICC/IF - Anti-c-Jun antibody [E254] (ab32137)



FCM - Anti-Mutant p53 antibody [Y5] (ab32049)



WB - Anti-p53 [DO-1] antibody (ab1101)

Citations

Anti-Cyclin B1 antibody [EPR17060] (ab181593)	Anti-Cyclin D1 antibody [EPR2241] (ab134175)	Anti-c-Jun antibody [E254] (ab32137)	Anti-c-Myc antibody [Y69] (ab32072)
<ul style="list-style-type: none"> J Cell Biol 217:179-193 (2018). PubMed: 29074707 PLoS One 12:e0177844 (2017). PubMed: 28542354 	<ul style="list-style-type: none"> J Transl Med 16:7 (2018). PubMed: 29343267 Stem Cells Int 2017:6158468 (2017). PubMed: 29098009 	<ul style="list-style-type: none"> Nat Commun 8:14272 (2017). PubMed: 28139683 Am J Transl Res 9:1193-1202 (2017). PubMed: 28386345 	<ul style="list-style-type: none"> Sci Rep 8:2021 (2018). PubMed: 29386660 J Transl Med 16:7 (2018). PubMed: 29343267
Anti-NF-κB p65 antibody [E379] (ab32536)	Anti-p21 antibody [EPR3993] (ab109199)	Anti-Mutant p53 antibody [Y5] (ab32049)	Anti-p53 antibody [DO-1] (ab1101)
<ul style="list-style-type: none"> Nat Med 24:154-164 (2018). PubMed: 29291352 Cancer Sci 109:132-140 (2018). PubMed: 29121426 	<ul style="list-style-type: none"> J Dermatol Sci N/A:N/A (2018). PubMed: 29307600 Cell Death Dis 9:105 (2018). PubMed: 29367621 	<ul style="list-style-type: none"> Nat Commun 9:562 (2018). PubMed: 29422620 Exp Ther Med 13:3189-3194 (2017). PubMed: 28588672 	<ul style="list-style-type: none"> Exp Ther Med 14:753-758 (2017). PubMed: 28672995 Nat Commun 8:313 (2017). PubMed: 28827596

Human Embryonic Stem Cell Marker Panel (ab109884)

Anti-Nanog antibody - ChIP Grade	Rb	•	WB	IHC	ICC/IF	FCM	ChIP	50 µl	ab21624
Anti-Oct4 antibody - ChIP Grade	Rb	• •	WB		ICC/IF	FCM	ChIP	50 µg	ab19857
Anti-SOX2 antibody	Rb	• • •	WB	IHC	ICC/IF			50 µg	ab97959
Anti-SSEA4 antibody [MC813]	Ms	• • •	WB	IHC	ICC/IF	FCM		50 µl	ab16287
Anti-TRA-1-60 (R) antibody [TRA-1-60]	Ms	•	WB	IHC	ICC/IF	FCM		50 µg	ab16288

Human Mesenchymal Stromal Cell Marker Panel (ab93758)

Anti-CD105 antibody [105C02]	Ms	•	WB	IHC		FCM		50 µl	ab44967
Anti-CD44 antibody [F10-44-2]	Ms	•	WB		ICC/IF	FCM		50 µg	ab6124
Anti-CD45 antibody	Rb	•	WB	IHC	ICC/IF	FCM		50 µg	ab10559
Anti-CD90 / Thy1 antibody [AF-9]	Ms	•		IHC		FCM		50 µg	ab23894
Anti-Integrin beta 1 antibody [EP1041Y]	Rb	•	WB	IHC				10 µl	ab52971

Mouse Embryonic Stem Cell Marker Panel (ab107156)

Anti-CD15 antibody [MC-480]	Ms	•		IHC	ICC/IF	FCM		50 µl	ab16285
Anti-Oct4 antibody - ChIP Grade	Rb	• •	WB		ICC/IF	FCM	ChIP	50 µg	ab19857
Anti-Nanog antibody	Rb	• •	WB	IHC	ICC/IF	FCM		50 µl	ab80892
Anti-SOX2 antibody	Rb	• • •	WB	IHC	ICC/IF			50 µg	ab97959

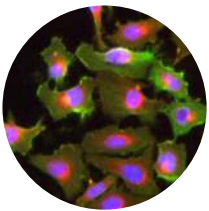
Mouse Mesenchymal Stromal Cell Marker Panel (ab93759)

Anti-CD44 antibody [KM201]	Rt	•	WB	IHC		FCM		50 µg	ab25340
Anti-CD45 antibody [I3/2.3]	Rt	•		IHC		FCM		50 µg	ab25386
Anti-CD90 / Thy1 antibody [IBL-6/23]	Rt	•		IHC	ICC/IF	FCM		50 µg	ab3105
Anti-Integrin beta 1 antibody [KML6]	Rt	•	WB	IHC	ICC/IF	FCM		50 µg	ab95623
Anti-Sca1 / Ly6A/E antibody [E13 161-7]	Rt	•			ICC/IF			50 µg	ab51317

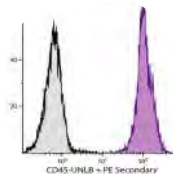
FCM = Flow Cytometry, Hu = Human, Gt = Goat, Ms = Mouse, Rb = Rabbit, Rt = Rat

Citations

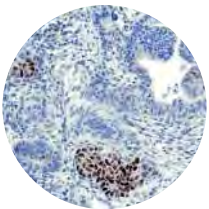
Human Mesenchymal Stromal Cell Marker Panel (ab93758)	Mouse Embryonic Stem Cell Marker Panel (ab107156)	Mouse Mesenchymal Stromal Cell Marker Panel (ab93759)	Anti-CD15 antibody [MC-480] (ab16285)
<ul style="list-style-type: none"> J Cell Biol 188:595-609 (2010). PubMed: 20176926 Reprod Sci 17:158-67 (2010). PubMed: 19805552 	<ul style="list-style-type: none"> Sci Rep 7:41852 (2017). PubMed: 28157205 Nature 463:621-6 (2010). PubMed: 20054295 	<ul style="list-style-type: none"> J Cell Biol 188:595-609 (2010). PubMed: 20176926 Eur J Oral Sci 117:34-42 (2009). PubMed: 19196316 	<ul style="list-style-type: none"> PeerJ 6:e4177 (2018). PubMed: 29312817 Mol Med Rep 15:3690-3698 (2017). PubMed: 28393187
Anti-CD44 antibody [F10-44-2] (ab6124)	Anti-CD90 / Thy1 antibody [IBL-6/23] (ab3105)	Anti-Integrin beta 1 antibody [EP1041Y] (ab52971)	Anti-Nanog antibody (ab80892)
<ul style="list-style-type: none"> Front Cell Infect Microbiol 7:154 (2017). PubMed: 28516064 Oncol Lett 14:2334-2340 (2017). PubMed: 28789451 	<ul style="list-style-type: none"> Mol Med Rep 15:613-626 (2017). PubMed: 28035356 Oncotarget 8:104418-104429 (2017). PubMed: 29262650 	<ul style="list-style-type: none"> Nat Commun 9:191 (2018). PubMed: 29335551 Front Mol Neurosci 10:431 (2017). PubMed: 29311819 	<ul style="list-style-type: none"> Stem Cell Res Ther 9:2 (2018). PubMed: 29304842 Nat Commun 9:424 (2018). PubMed: 29382819
Anti-Oct4 antibody (ab19857)	Anti-Sca1 / Ly6A/E antibody [E13 161-7] (ab51317)	Anti-SOX2 antibody (ab97959)	Anti-SSEA4 antibody [MC813] (ab16287)
<ul style="list-style-type: none"> Sci Rep 8:1189 (2018). PubMed: 29352121 Stem Cell Res 28:25-28 (2018). PubMed: 29414414 	<ul style="list-style-type: none"> JCI Insight 2:N/A (2017). PubMed: 28614787 Stem Cells Transl Med 6:394-404 (2017). PubMed: 28191756 	<ul style="list-style-type: none"> Stem Cells Dev 27:112-122 (2018). PubMed: 29161957 PeerJ 6:e4177 (2018). PubMed: 29312817 	<ul style="list-style-type: none"> Stem Cell Res 28:21-24 (2018). PubMed: 29414413 Stem Cell Reports 8:883-893 (2017). PubMed: 28344003



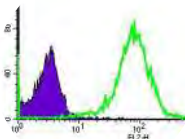
ICC/IF - Anti-CD44 antibody [F10-44-2] (ab6124)



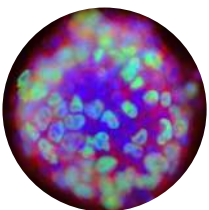
FCM - Anti-CD45 antibody [I3/2.3] (ab25386)



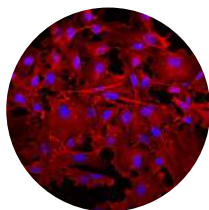
IHC - Anti-Nanog antibody (ab80892)



FCM - Anti-Oct4 antibody (ab19857)



ICC/IF - Anti-SOX2 antibody (ab97959)



ICC/IF - Anti-SSEA4 [MC813] antibody (ab16287)

Antibody Panel and Components	Reactivity				Application	Size	Cat. No.
	Host	Hu	Ms	Rt			
Multicolor Human B Cell Marker Panel (ab106071)							
Anti-CD5 antibody [CRIS1] (Phycoerythrin)	Ms	•			FCM	50 tests	ab1157
Anti-CD20 antibody [B9E9] (FITC)	Ms	•			FCM	50 tests	ab1169
Anti-CD19 antibody [LT19] (Allophycocyanin)	Ms	•			FCM	50 tests	ab18224
Anti-CD45 antibody [F10-89-4] (PE/Cy7 [®])	Ms	•			FCM	50 tests	ab46729

Multicolor Human T Cell Marker Panel (ab106073)

Anti-CD3 antibody [MEM-57] (FITC)	Ms	•			FCM	50 tests	ab69764
Anti-CD4 antibody [MEM-241] (Phycoerythrin)	Ms	•			FCM	50 tests	ab18282
Anti-CD8 antibody [MEM-31] (Allophycocyanin)	Ms	•			FCM	50 tests	ab26004
Anti-CD45 antibody [F10-89-4] (PE/Cy7 [®])	Ms	•			FCM	50 tests	ab46729

FCM = Flow Cytometry, Hu = Human, Gt = Goat, Ms = Mouse, Rb = Rabbit, Rt = Rat

Antibody Panel and Components	Reactivity				Application	Size	Cat. No.
	Host	Hu	Ms	Rt			
Acetylated Histone H3 Antibody Sampler Panel (ab218055)							
Anti-Histone H3 (acetyl K14) antibody [EP964Y] •	Rb	•	•		WB IHC ICC/IF ChIP	10 µl	ab52946
Anti-Histone H3 (acetyl K18) antibody [EP959Y] •	Rb	•	•	•	WB IHC ICC/IF FCM ChIP	10 µl	ab40888
Anti-Histone H3 antibody [EPR16987] •	Rb	•	•	•	WB IHC ICC/IF FCM ChIP	10 µl	ab176842
Anti-Histone H3 (acetyl K23) antibody [EPR17712] •	Rb	•	•		WB ICC/IF ChIP	10 µl	ab177275
Anti-Histone H3 (acetyl K27) antibody [EP16602] •	Rb	•	•	•	WB IHC ICC/IF ChIP	10 µl	ab177178
Anti-Histone H3 (acetyl K4) antibody [EPR16596] •	Rb	•	•		WB ICC/IF ChIP	10 µl	ab176799
Anti-Histone H3 (acetyl K9) antibody [EPR16988] •	Rb	•	•	•	WB IHC ICC/IF ChIP	10 µl	ab177177
Goat Anti-Rabbit IgG H&L (HRP)	Gt				WB IHC	100 µg	ab205718

Acetylated Histone H4 Antibody Sampler Pack (ab218056)

Anti-Histone H4 antibody [EPR16599] •	Rb	•	•	•	WB IHC ICC/IF ChIP	10 µl	ab177840
Anti-Histone H4 (acetyl K5) antibody [EP1000Y] •	Rb	•	•	•	WB IHC ICC/IF ChIP	10 µl	ab51997
Anti-Histone H4 (acetyl K8) antibody [EP1002Y] •	Rb	•	•	•	WB IHC ICC/IF FCM ChIP	10 µl	ab45166
Anti-Histone H4 (acetyl K12) antibody [EPR17906] •	Rb	•	•	•	WB IHC ICC/IF FCM	10 µl	ab177793
Anti-Histone H4 (acetyl K16) antibody [EPR1004] •	Rb	•	•	•	WB IHC ICC/IF FCM	10 µl	ab109463
Anti-Histone H4 (acetyl K20) antibody [EPR16998(2)] •	Rb	•	•		WB ICC/IF	10 µl	ab177191
Goat Anti-Rabbit IgG H&L (HRP)	Gt				WB IHC	100 µg	ab205718

DNA Damage Kinases Panel (ab103970)

Anti-ATM (phospho S1981) antibody [10H11.E12]	Ms	•	•		WB IHC ICC/IF FCM	25 µg	ab36810
Anti-ATM antibody	Rb	•	•		WB ICC/IF	25 µg	ab82512
Anti-ATR (phospho S428) antibody [EPR2184] •	Rb	•			WB IHC	10 µl	ab178407
Anti-ATR antibody - ChIP Grade	Rb	•	•		WB ICC/IF ChIP	25 µl	ab2905
Anti-DNA PKcs (phospho S2056) antibody - ChIP Grade	Rb	•			WB IHC ICC/IF FCM ChIP	25 µg	ab18192
Anti-DNA PKcs antibody	Rb	•			WB ICC/IF	25 µl	ab70250

Histone H3 (K4 methylation) Panel (ab103938)

Anti-Histone H3 (di methyl K4) antibody [Y47] - ChIP Grade •	Rb	•	•	•	WB IHC ICC/IF FCM ChIP	25 µl	ab32356
Anti-Histone H3 (mono methyl K4) antibody - ChIP Grade	Rb	•	•		WB IHC ICC/IF FCM ChIP	25 µg	ab8895
Anti-Histone H3 (tri methyl K4) antibody [mAbcam12209] - ChIP Grade	Ms	•	•	•	WB ICC/IF FCM ChIP	25 µg	ab12209
Anti-Histone H3 antibody [EPR16987] •	Rb	•	•	•	WB IHC ICC/IF FCM ChIP	10 µl	ab176842

FCM = Flow Cytometry, Hu = Human, Gt = Goat, Ms = Mouse, Rb = Rabbit, Rt = Rat

Histone H3 (K9 methylation) Panel (ab113754)

Anti-Histone H3 (di methyl K9) antibody [mAbcam 1220] - ChIP Grade	Ms	• • •	WB IHC ICC/IF FCM ChIP	25 µg	ab1220
Anti-Histone H3 (mono methyl K9) antibody - ChIP Grade	Rb	• •	WB IHC ICC/IF FCM ChIP	25 µg	ab9045
Anti-Histone H3 (tri methyl K9) antibody - ChIP Grade	Rb	• • •	WB IHC ICC/IF FCM ChIP	25 µg	ab8898
Anti-Histone H3 antibody [EPR16987] •	Rb	• • •	WB IHC ICC/IF FCM ChIP	10 µl	ab176842

Homologous Recombination Panel (ab115486)

Anti-gamma H2A.X (phospho S139) antibody - ChIP Grade	Rb	• • •	WB IHC ICC/IF ChIP	25 µg	ab2893
Anti-Histone H2A.X antibody	Rb	•	WB IHC	25 µg	ab10475
Anti-RAD54 antibody	Rb	•	WB	25 µg	ab10705
Anti-p95 NBS1 antibody	Rb	• • •	WB ICC/IF	25 µg	ab23996
Anti-CtIP antibody	Rb	• •	WB ICC/IF	25 µg	ab38016
Anti-Rad51 antibody	Rb	• •	WB ICC/IF	25 µg	ab84304

Homologous Recombination Panel (ab115487)

Anti-gamma H2A.X (phospho S139) antibody - ChIP Grade	Rb	• • •	WB IHC ICC/IF ChIP	25 µg	ab2893
Anti-Histone H2A.X antibody	Rb	•	WB IHC	25 µg	ab10475
Anti-RAD54 antibody	Rb	•	WB	25 µg	ab10705
Anti-Rad51 antibody	Rb	• •	WB ICC/IF	25 µg	ab84304

Non-Homologous End Joining Panel (ab213658)

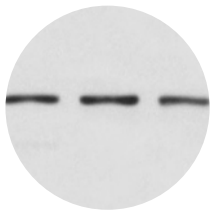
Anti-gamma H2A.X (phospho S139) antibody - ChIP Grade	Rb	• • •	WB IHC ICC/IF ChIP	25 µg	ab2893
Anti-Histone H2A.X antibody	Rb	•	WB IHC	25 µg	ab10475
Anti-Ku70 antibody	Rb	•	WB IHC ICC/IF	25 µg	ab83501
Anti-Ku80 antibody	Rb	•	WB	25 µg	ab87860
Anti-DNA Ligase IV antibody [EPR16531] • ■	Rb	•	WB IHC ICC/IF	25 µl	ab193353

RNA Polymerase II CTD Panel (ab103968)

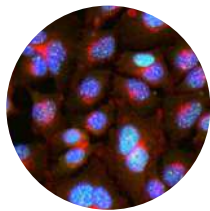
Anti-RNA Polymerase II CTD repeat YSPTSPS (phospho S2) antibody - ChIP Grade	Rb	• • •	WB IHC ICC/IF ChIP	25 µg	ab5095
Anti-RNA Polymerase II CTD repeat YSPTSPS (phospho S5) antibody - ChIP Grade	Rb	• • •	WB IHC ICC/IF ChIP	25 µg	ab5131
Anti-RNA Polymerase II CTD repeat YSPTSPS (phospho S5) antibody [4H8] - ChIP Grade	Ms	• • •	WB ICC/IF FCM ChIP	25 µg	ab5408
Anti-RNA Polymerase II CTD repeat YSPTSPS antibody [8WG16] - ChIP Grade	Ms	• •	WB ICC/IF FCM ChIP	25 µg	ab817

● RabMAB® ■ KO Validated

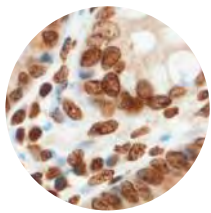
FCM = Flow Cytometry, Hu = Human, Gt = Goat, Ms = Mouse, Rb = Rabbit, Rt = Rat



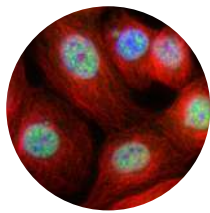
WB - Anti-DNA Ligase IV antibody [EPR16531] (ab193353)



ICC/IF - Anti-gamma H2A.X (phospho S139) antibody (ab2893)



IHC - Anti-Histone H3 (tri methyl K9) antibody (ab8898)



ICC/IF - Anti-RNA polymerase II CTD repeat YSPTSPS (phospho S2) antibody (ab5095)

Citations

DNA Damage Kinases Panel (ab103970)	Histone H3 (K4 methylation) Panel (ab103938)	Histone H3 (K9 methylation) Panel (ab113754)	Homologous Recombination Panel (ab115486)
<ul style="list-style-type: none"> Cell Cycle 9:1421-33 (2010). PubMed: 20305393 DNA Repair (Amst) 9:76-82 (2010). PubMed: 19959400 	<ul style="list-style-type: none"> Genes Dev 24:590-601 (2010). PubMed: 20231316 Nucleic Acids Res 38:1441-9 (2010). PubMed: 20015969 	<ul style="list-style-type: none"> Nat Commun 5:5264 (2014). PubMed: 25345385 	<ul style="list-style-type: none"> PLoS One 5:e12055 (2010). PubMed: 20700465 Nat Cell Biol 11:1315-24 (2009). PubMed: 19838172
Homologous Recombination Panel (ab115487)	RNA polymerase II CTD Panel (ab103968)	Anti-Histone H3 (acetyl K14) antibody [EP964Y] (ab52946)	Anti-gamma H2A.X (phospho S139) antibody (ab2893)
<ul style="list-style-type: none"> PLoS Genet 6: (2010). PubMed: 20711355 PLoS One 5:e12055 (2010). PubMed: 20700465 	<ul style="list-style-type: none"> Genome Res 22:259-70 (2012). PubMed: 22086061 Genes Dev 24:171-82 (2010). PubMed: 20080953 	<ul style="list-style-type: none"> PLoS Negl Trop Dis 11:e0005539 (2017). PubMed: 28406899 Sci Rep 7:5254 (2017). PubMed: 28701802 	<ul style="list-style-type: none"> Cell Death Dis 9:178 (2018). PubMed: 29415988 Dev Cell 41:623-637.e9 (2017). PubMed: 28633017

Antibody Panel and Components	Reactivity				Application	Size	Cat. No.
	Host	Hu	Ms	Rt			

Mouse Loading Control Antibody Panel (ab199713)

Anti-alpha Tubulin antibody [DM1A] - Loading Control	Ms	•	•	•	WB IHC ICC/IF FCM	40 µg	ab7291
Anti-alpha 1 Sodium Potassium ATPase antibody [464.6] - Plasma Membrane Marker	Ms	•	•	•	WB IHC ICC/IF FCM	40 µg	ab7671
Anti-GAPDH antibody [mAbcam 9484] - Loading Control	Ms	•	•	•	WB IHC FCM	40 µg	ab9484
Anti-Histone H3 antibody [mAbcam 24834] - Nuclear Loading Control and ChIP Grade	Ms	•	•	•	WB ChIP	40 µg	ab24834
Anti-COX IV antibody [mAbcam33985] - Mitochondrial Marker	Ms	•	•	•	WB IHC ICC/IF FCM	40 µg	ab33985
Rabbit Anti-Mouse IgG H&L (HRP)	Rb				WB IHC ICC/IF	200 µg	ab6728

Mouse Loading Control Antibody Panel (Alexa Fluor® 680) (ab199716)

Anti-beta Actin antibody [mAbcam 8226] (Alexa Fluor® 680) - Loading Control	Ms	•	•		WB	40 µg	ab184092
Anti-alpha Tubulin antibody [DM1A] (Alexa Fluor® 680) - Loading Control	Ms	•	•		WB	40 µg	ab184093
Anti-GAPDH antibody [mAbcam 9484] (Alexa Fluor® 680) - Loading Control	Ms	•			WB	40 µg	ab184095

Mouse Loading Control Antibody Panel (Alexa Fluor® 790) (ab200701)

Anti-alpha Tubulin antibody [DM1A] (Alexa Fluor® 790) - Loading Control	Ms	•	•		WB	40 µg	ab184577
Anti-beta Actin antibody [mAbcam 8226] (Alexa Fluor® 790) - Loading Control	Ms	•	•		WB	40 µg	ab184576
Anti-GAPDH antibody [mAbcam 9484] (Alexa Fluor® 790) - Loading Control	Ms	•	•		WB	40 µg	ab184578

Mouse Loading Control Antibody Panel (HRP) (ab199715)

Anti-GAPDH antibody [mAbcam 9484] (HRP) - Loading Control	Ms	•	•	•	WB	40 µl	ab9482
Anti-alpha Tubulin antibody [DM1A] (HRP) - Loading Control	Ms	•	•	•	WB IHC	40 µl	ab40742
Anti-COX IV antibody [mAbcam33985] (HRP) - Mitochondrial Marker	Ms	•	•		WB IHC	40 µl	ab62164
Anti-alpha 1 Sodium Potassium ATPase antibody [464.6] (HRP) - Plasma Membrane Marker	Ms	•	•	•	WB IHC	40 µl	ab196696

Rabbit Loading Control Antibody Panel (ab199712)

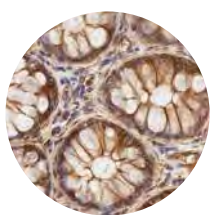
Anti-alpha Tubulin antibody [EPR13478(B)] - Loading Control •	Rb	•	•	•	WB IHC ICC/IF FCM	10 µl	ab176560
Anti-COX IV antibody [EPR9442(ABC)] - Mitochondrial Loading Control •	Rb	•	•	•	WB IHC ICC/IF FCM	10 µl	ab202554
Anti-GAPDH antibody [EPR16891] •	Rb	•	•	•	WB IHC ICC/IF FCM	10 µl	ab181602
Anti-Histone H3 antibody [EPR16987] - Nuclear Loading Control and ChIP Grade •	Rb	•	•	•	WB IHC ICC/IF FCM ChIP	10 µl	ab176842
Anti-Sodium Potassium ATPase antibody [EP1845Y] - Plasma Membrane Loading Control •	Rb	•	•	•	WB IHC ICC/IF FCM	10 µl	ab76020
Goat Anti-Rabbit IgG H&L (HRP)	Gt				WB IHC	100 µg	ab205718

Rabbit Loading Control Antibody Panel (HRP) (ab199714)

Anti-GAPDH antibody [EPR16891] (HRP) •	Rb	•	•	•	WB IHC	40 µl	ab201822
Anti-Histone H3 antibody [EPR16987] (HRP) •	Rb	•	•		WB IHC	40 µl	ab209023
Anti-COX IV antibody [EPR9442(ABC)] (HRP) •	Rb	•	•	•	WB IHC	40 µl	ab209958
Anti-Sodium Potassium ATPase antibody [EP1845Y] (HRP) - Plasma Membrane Loading Control •	Rb	•	•	•	WB IHC	40 µl	ab185065
Anti-alpha Tubulin antibody [EPR13478(B)] (HRP) - Loading Control •	Rb	•	•	•	WB IHC	40 µl	ab185067

● RabMab® ■ KO Validated

FCM = Flow Cytometry, Hu = Human, Gt = Goat, Ms = Mouse, Rb = Rabbit, Rt = Rat



IHC - Anti-alpha Tubulin antibody [DM1A] (ab7291)



WB - Anti-GAPDH antibody [EPR16891] (ab181602)

Citations

Mouse Loading Control Antibody Panel (ab199713)	Mouse Loading Control Antibody Panel (HRP) (ab199715)	Rabbit Loading Control Antibody Panel (ab199712)	Rabbit Loading Control Antibody Panel (HRP) (ab199714)
<ul style="list-style-type: none"> Cell Death Differ N/A:N/A (2014). PubMed: 24488099 PLoS One 9:e91248 (2014). PubMed: 24642683 	<ul style="list-style-type: none"> PLoS One 9:e86988 (2014). PubMed: 24466306 Int J Mol Sci 15:1538-53 (2014). PubMed: 24451137 	<ul style="list-style-type: none"> Hum Mol Genet 23:2005-22 (2014). PubMed: 24271013 Mol Cancer 13:22 (2014). PubMed: 24495796 	<ul style="list-style-type: none"> Exp Cell Res 320:175-87 (2014). PubMed: 24246223 J Biol Chem 289:10155-67 (2014). PubMed: 24563482