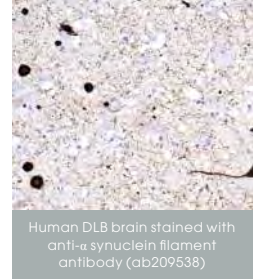


# Parkinson's Disease

abcam

帕金森氏症研究工具

帕金森氏症的指標性病理特徵包括中腦內黑質緻密部的多巴胺能神經元 (dopaminergic neuron) 缺失、與錯誤折疊的  $\alpha$ -synuclein 聚集形成的路易體 (Lewy body)。  
歡迎洽詢 Abcam 台灣代理 — 伯森生技，索取詳細產品資訊與最新優惠訊息。



## Alpha Synuclein

Type	Product	Host	Reactivity	Application	Cat. No.
<b><math>\alpha</math>-Synuclein</b>					
抗體	Anti-Alpha-Synuclein antibody [MJFR1]	Rb	Hu	ELISA, FCM, IHC, ICC/IF, IP, WB	ab138501 ●■
磷酸化抗體	Anti-Alpha-Synuclein (phospho S129) antibody [MJF-R13 (8-8)]	Rb	Hu	WB	ab168381 ●
蛋白	Recombinant Human Alpha-Synuclein protein aggregate (Active)			SDS-PAGE, FuncS	ab218819
蛋白	Recombinant Human Alpha-Synuclein protein aggregate (Control)			SDS-PAGE, FuncS	ab218817
蛋白	Recombinant Human Alpha-Synuclein protein monomer (Active)			SDS-PAGE, FuncS	ab218818
蛋白	Recombinant Human Alpha-Synuclein protein monomer (Control)			SDS-PAGE	ab218816
<b><math>\alpha</math>-Synuclein Filament</b>					
抗體	Anti-Alpha-Synuclein Filament antibody [MJFR-14-6-4-2] - Conformation-Specific	Rb	Hu, Ms, Rt	IHC, ICC/IF, Dot	ab209538 ●
抗體	Anti-Alpha-Synuclein Filament antibody [MJFR-14-6-4-2] - BSA and Azide free	Rb	Hu, Ms, Rt	IHC, ICC/IF, Dot	ab214033 ●

## Dopaminergic Neuron Markers

Type	Product	Host	Reactivity	Application	Cat. No.
<b>Tyrosine Hydroxylase (TH)</b>					
抗體	Anti-Tyrosine Hydroxylase antibody	Rb	Hu, Ms, Rt, Gt	IHC, ICC/IF, IP, WB	ab112
抗體	Anti-Tyrosine Hydroxylase antibody [EP1533Y]	Rb	Hu, Ms, Rt	FCM, IHC, ICC/IF, WB	ab75875 ●
螢光抗體	Anti-Tyrosine Hydroxylase antibody [EP1533Y] (Alexa Fluor® 488)	Rb	Hu, Rt	FCM, IHC, ICC/IF	ab192463 ●
抗體	Anti-Tyrosine Hydroxylase antibody [EP1533Y] - BSA and Azide free	Rb	Hu, Ms, Rt	FCM, IHC, ICC/IF, WB	ab219729 ●
胜肽	Human Tyrosine Hydroxylase peptide			Blocking peptide for ab75875	ab218000
<b>Dopamine Transporter (DAT)</b>					
抗體	Anti-Dopamine Transporter antibody [hDAT-NT]	Rt	Hu, Ms	IHC, ICC	ab5990
抑制劑	Bupropion hydrochloride			Non-selective DAT inhibitor, FunS	ab120534
抑制劑	GBR 12909 dihydrochloride			Selective DAT inhibitor, FunS	ab120607

● = RabMAb®, ■ = KO Validated. FCM = Flow Cytometry, FuncS = Functional Study, Gt = Goat, Hu = Human, Ms = Mouse, Rb = Rabbit, Rt = Rat

