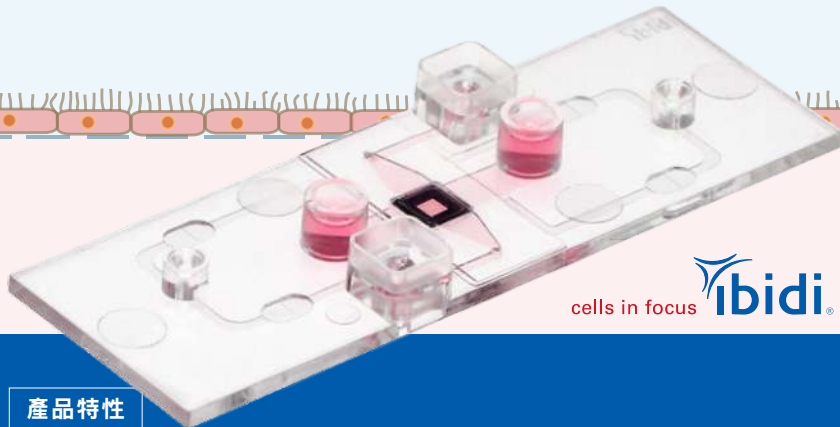


全新改版

μ-Slide Membrane ibiPore Flow

具備兩條可培養細胞的通道，通道交疊處採多孔玻璃膜設計，能將傳統使用 Transwell (Boyden chamber) 進行的各式 Transmigration & Transport 試驗轉移至流體環境下進行，模擬循環系統，更貼近生理環境！



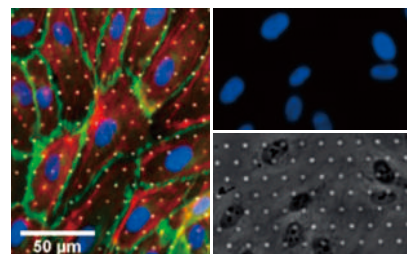
cells in focus **ibidi**

產品特性

- ✓ 搭配幫浦 (例如 ibidi Pump) 不同剪切應力設定，可模擬生理上不同流體環境，如動脈、靜脈、肺泡等。
- ✓ 玻璃膜具極佳光學性質，可輕易獲得清晰顯微鏡成像。
- ✓ 針對不同細胞、不同應用，提供多種玻璃膜孔徑大小可選。
- ✓ 符合標準載玻片規格 (75.5 x 25.5 mm)，廣泛適用各類倒立式顯微鏡。

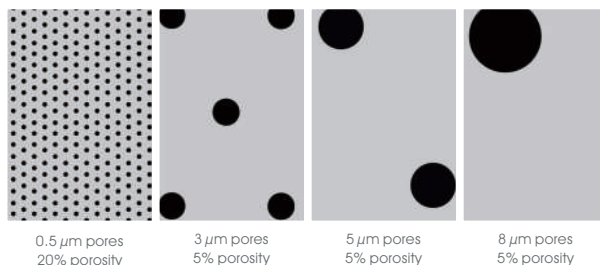
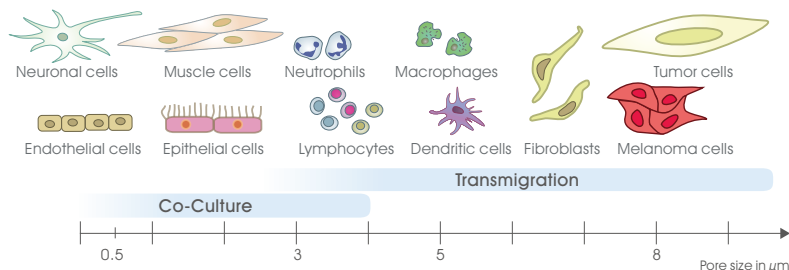
產品用途

- 通過多孔膜的細胞遷移 (Transmigration)、趨化 (Chemotaxis)、侵入 (Invasion) 試驗。
- 肺泡細胞或皮膚細胞微環境模擬。
- 細胞極化試驗 (Apical-basal cell polarity assays)。
- 細胞共同培養 (Co-culture)、血腦障壁 (Blood brain barrier) 模擬等等。



Human endothelial cells on 3 μm ibiPore membrane after coating with Collagen Type IV. Image key: DAPI (blue), VE-cadherin (green), F-actin (red).

依據細胞種類與應用實驗，選擇不同玻璃膜孔徑大小進行實驗



Membrane Pore Size and Porosity	Applications	Example Cell Types
0.5 μm pores, 20% porosity	Permeability and transport studies, Co-culture	Lung cells, Epithelial cells
3 μm pores, 5% porosity	Transendothelial migration	Leukocytes (e.g., neutrophils), Lymphocytes (e.g., T cells or B cells)
5 μm pores, 5% porosity	Invasion, Migration	Monocytes, Macrophages, Lymphocytes
8 μm pores, 5% porosity	Invasion, Migration	Tumor cells, Endothelial & Epithelial cells, Fibroblasts, Melanoma cells

Product	Pore Size	Porosity	Pack Size	Cat. No.
μ-Slide Membrane ibiPore 0.5μm/20% Flow ibiTreat	0.5 μm	20%	10 pcs./box	IB-85116
μ-Slide Membrane ibiPore 0.5μm/20% Flow ibiTreat, Sample Pack			2 pcs./box	IB-85116-S
μ-Slide Membrane ibiPore 3.0μm/5% Flow ibiTreat	3.0 μm	5%	10 pcs./box	IB-85126
μ-Slide Membrane ibiPore 3.0μm/5% Flow ibiTreat, Sample Pack			2 pcs./box	IB-85126-S
μ-Slide Membrane ibiPore 5.0μm/5% Flow ibiTreat	5.0 μm	5%	10 pcs./box	IB-85136
μ-Slide Membrane ibiPore 5.0μm/5% Flow ibiTreat, Sample Pack			2 pcs./box	IB-85136-S
μ-Slide Membrane ibiPore 8.0μm/5% Flow ibiTreat	8.0 μm	5%	10 pcs./box	IB-85146
μ-Slide Membrane ibiPore 8.0μm/5% Flow ibiTreat, Sample Pack			2 pcs./box	IB-85146-S



更多產品資訊

