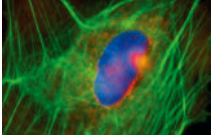


耗材產品全面第二件6折

2020/11/2 - 2020/12/18

免疫螢光染色 IMMUNOFLUORESCENCE



3 Well | 8 Well | 12 Well Chamber, removable

Removable silicone chamber for cell culture and immunofluorescence, suitable for upright and inverted microscopy and long-term storage



μ -Slide 2 Well | 4 Well | 8 Well

Chambered coverslips that combine optimal conditions for cell culture, immunofluorescence and high-resolution microscopy; available with an ibidi Polymer Coverslip or a glass bottom

細胞傷口癒合 WOUND HEALING & MIGRATION



Culture-Insert 2 Well | 3 Well | 4 Well

Silicone inserts with a defined cell-free gap for wound healing, migration, 2D invasion assays, and co-cultivation of cells; available as individual inserts in a μ -Dish or as 25 pieces in a transport dish for self-insertion



Culture-Insert 2 Well 24

The complete solution for high throughput wound healing and migration experiments

流體環境培養 CELL CULTURE UNDER FLOW



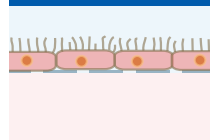
μ -Slide I Luer

Flow channel slides, available with different heights and coatings

μ -Slide III^{3D} Perfusion

A slide for optimal nutrient supply during long-term cultivation of cells or organoids in 3D matrices via medium flow

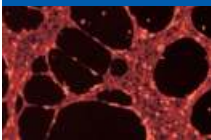
流體環境 細胞遷移試驗 TRANSMEMBRANE



μ -Slide Membrane ibiPore Flow

A slide with a porous glass membrane and excellent optical properties for transport and transmigration studies under static and flow conditions

細胞血管新生 ANGIOGENESIS



μ -Slide Angiogenesis | μ -Plate Angiogenesis 96 Well

A slide optimized for tube formation assays, 3D cell culture, and immunofluorescence; also available with 96 wells for high throughput applications

細胞趨化 CHEMOTAXIS



μ -Slide Chemotaxis

Specialized geometry for assays with fast or slow migrating cells in 2D culture or 3D matrices; stable gradients for more than 48 hours

高通量 顯微影像觀察 HIGHTHROUGHPUT



μ -Plate 24 Well | 96 Well

Plates with a flat, clear bottom for brilliant images in high throughput cell microscopy applications; plate dimensions meet ANSI/SLAS (SBS) Standards



掃描瀏覽 ibidi【細胞培養暨影像觀察兩用玻片/皿】全系列產品完整說明

